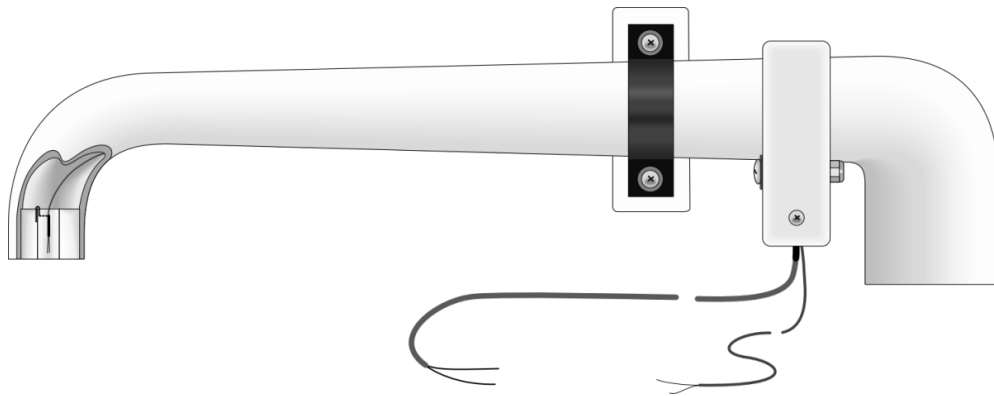


ASPTC

Aspirated Shield with
Fine Wire Thermocouple



Limited Warranty

“Products manufactured by CSI are warranted by CSI to be free from defects in materials and workmanship under normal use and service for twelve months from the date of shipment unless otherwise specified in the corresponding product manual. (Product manuals are available for review online at www.campbellsci.com.) Products not manufactured by CSI, but that are resold by CSI, are warranted only to the limits extended by the original manufacturer. Batteries, fine-wire thermocouples, desiccant, and other consumables have no warranty. CSI’s obligation under this warranty is limited to repairing or replacing (at CSI’s option) defective Products, which shall be the sole and exclusive remedy under this warranty. The Customer assumes all costs of removing, reinstalling, and shipping defective Products to CSI. CSI will return such Products by surface carrier prepaid within the continental United States of America. To all other locations, CSI will return such Products best way CIP (port of entry) per Incoterms ® 2010. This warranty shall not apply to any Products which have been subjected to modification, misuse, neglect, improper service, accidents of nature, or shipping damage. This warranty is in lieu of all other warranties, expressed or implied. The warranty for installation services performed by CSI such as programming to customer specifications, electrical connections to Products manufactured by CSI, and Product specific training, is part of CSI’s product warranty. **CSI EXPRESSLY DISCLAIMS AND EXCLUDES ANY IMPLIED WARRANTIES OF MERCHANTABILITY OR FITNESS FOR A PARTICULAR PURPOSE. CSI hereby disclaims, to the fullest extent allowed by applicable law, any and all warranties and conditions with respect to the Products, whether express, implied or statutory, other than those expressly provided herein.”**

Assistance

Products may not be returned without prior authorization. The following contact information is for US and international customers residing in countries served by Campbell Scientific, Inc. directly. Affiliate companies handle repairs for customers within their territories. Please visit www.campbellsci.com to determine which Campbell Scientific company serves your country.

To obtain a Returned Materials Authorization (RMA) number, contact CAMPBELL SCIENTIFIC, INC., phone (435) 227-9000. Please write the issued RMA number clearly on the outside of the shipping container. Campbell Scientific's shipping address is:

CAMPBELL SCIENTIFIC, INC.

RMA# _____
815 West 1800 North
Logan, Utah 84321-1784

For all returns, the customer must fill out a "Statement of Product Cleanliness and Decontamination" form and comply with the requirements specified in it. The form is available from our website at www.campbellsci.com/repair. A completed form must be either emailed to repair@campbellsci.com or faxed to (435) 227-9106. Campbell Scientific is unable to process any returns until we receive this form. If the form is not received within three days of product receipt or is incomplete, the product will be returned to the customer at the customer's expense. Campbell Scientific reserves the right to refuse service on products that were exposed to contaminants that may cause health or safety concerns for our employees.

Safety

DANGER — MANY HAZARDS ARE ASSOCIATED WITH INSTALLING, USING, MAINTAINING, AND WORKING ON OR AROUND TRIPODS, TOWERS, AND ANY ATTACHMENTS TO TRIPODS AND TOWERS SUCH AS SENSORS, CROSSARMS, ENCLOSURES, ANTENNAS, ETC. FAILURE TO PROPERLY AND COMPLETELY ASSEMBLE, INSTALL, OPERATE, USE, AND MAINTAIN TRIPODS, TOWERS, AND ATTACHMENTS, AND FAILURE TO HEED WARNINGS, INCREASES THE RISK OF DEATH, ACCIDENT, SERIOUS INJURY, PROPERTY DAMAGE, AND PRODUCT FAILURE. TAKE ALL REASONABLE PRECAUTIONS TO AVOID THESE HAZARDS. CHECK WITH YOUR ORGANIZATION'S SAFETY COORDINATOR (OR POLICY) FOR PROCEDURES AND REQUIRED PROTECTIVE EQUIPMENT PRIOR TO PERFORMING ANY WORK.

Use tripods, towers, and attachments to tripods and towers only for purposes for which they are designed. Do not exceed design limits. Be familiar and comply with all instructions provided in product manuals. Manuals are available at www.campbellsci.com or by telephoning (435) 227-9000 (USA). You are responsible for conformance with governing codes and regulations, including safety regulations, and the integrity and location of structures or land to which towers, tripods, and any attachments are attached. Installation sites should be evaluated and approved by a qualified engineer. If questions or concerns arise regarding installation, use, or maintenance of tripods, towers, attachments, or electrical connections, consult with a licensed and qualified engineer or electrician.

General

- Prior to performing site or installation work, obtain required approvals and permits. Comply with all governing structure-height regulations, such as those of the FAA in the USA.
- Use only qualified personnel for installation, use, and maintenance of tripods and towers, and any attachments to tripods and towers. The use of licensed and qualified contractors is highly recommended.
- Read all applicable instructions carefully and understand procedures thoroughly before beginning work.
- Wear a **hardhat** and **eye protection**, and take **other appropriate safety precautions** while working on or around tripods and towers.
- **Do not climb** tripods or towers at any time, and prohibit climbing by other persons. Take reasonable precautions to secure tripod and tower sites from trespassers.
- Use only manufacturer recommended parts, materials, and tools.

Utility and Electrical

- **You can be killed** or sustain serious bodily injury if the tripod, tower, or attachments you are installing, constructing, using, or maintaining, or a tool, stake, or anchor, come in **contact with overhead or underground utility lines**.
- Maintain a distance of at least one-and-one-half times structure height, 20 feet, or the distance required by applicable law, **whichever is greater**, between overhead utility lines and the structure (tripod, tower, attachments, or tools).
- Prior to performing site or installation work, inform all utility companies and have all underground utilities marked.
- Comply with all electrical codes. Electrical equipment and related grounding devices should be installed by a licensed and qualified electrician.

Elevated Work and Weather

- Exercise extreme caution when performing elevated work.
- Use appropriate equipment and safety practices.
- During installation and maintenance, keep tower and tripod sites clear of un-trained or non-essential personnel. Take precautions to prevent elevated tools and objects from dropping.
- Do not perform any work in inclement weather, including wind, rain, snow, lightning, etc.

Maintenance

- Periodically (at least yearly) check for wear and damage, including corrosion, stress cracks, frayed cables, loose cable clamps, cable tightness, etc. and take necessary corrective actions.
- Periodically (at least yearly) check electrical ground connections.

WHILE EVERY ATTEMPT IS MADE TO EMBODY THE HIGHEST DEGREE OF SAFETY IN ALL CAMPBELL SCIENTIFIC PRODUCTS, THE CUSTOMER ASSUMES ALL RISK FROM ANY INJURY RESULTING FROM IMPROPER INSTALLATION, USE, OR MAINTENANCE OF TRIPODS, TOWERS, OR ATTACHMENTS TO TRIPODS AND TOWERS SUCH AS SENSORS, CROSSARMS, ENCLOSURES, ANTENNAS, ETC.

Table of Contents

PDF viewers: These page numbers refer to the printed version of this document. Use the PDF reader bookmarks tab for links to specific sections.

1. Introduction	1
2. Precautions	1
3. Initial Inspection	1
4. QuickStart	1
5. Overview	3
6. Specifications	4
7. Installation	4
7.1 Power Considerations	4
7.2 Mounting	4
7.3 Wiring.....	5
7.4 Programming	6
7.4.1 Absolute Temperature	6
7.4.2 Delta Temperature	7
8. Maintenance.....	7

Appendices

A. Importing Short Cut Code into CRBasic Editor....	A-1
B. Example Programs	B-1

Figures

7-1. ASPTCs Mounted to Bowen Ratio Arms	5
7-2. ASPTC Mounted to the UT018	5

Tables

7-1. Wire Color, Function, and Connections to the Data Logger.....	6
B-1. Wiring for Absolute Temperature Program Example.....	B-1
B-2. Wiring for Temperature Gradient Example Program	B-2

CRBasic Examples

B-1. CR1000X Program Measuring Absolute Temperature Using the ASPTC	B-1
---	-----

B-2. CR1000X Program Measuring Temperature Gradient Using
Two ASPTCs B-2

ASPTC Aspirated Shield with Fine Wire Thermocouple

1. Introduction

The ASPTC consists of a type-E fine-wire thermocouple mounted in a fan-aspirated radiation shield to provide highly accurate air temperature measurements. You can use one ASPTC to measure absolute air temperature, or you can use two ASPTCs to make delta temperature measurements.

NOTE

This manual provides information only for CRBasic data loggers. For retired Edlog data logger support, see an older manual at www.campbellsci.com/old-manuals.

2. Precautions

- READ AND UNDERSTAND the *Safety* section at the front of this manual.
- Care should be taken when opening the shipping package to not damage or cut the cable jacket. If damage to the cable is suspected, contact Campbell Scientific.

3. Initial Inspection

Upon receipt of the sensor, inspect the packaging and contents for damage. File damage claims with the shipping company.

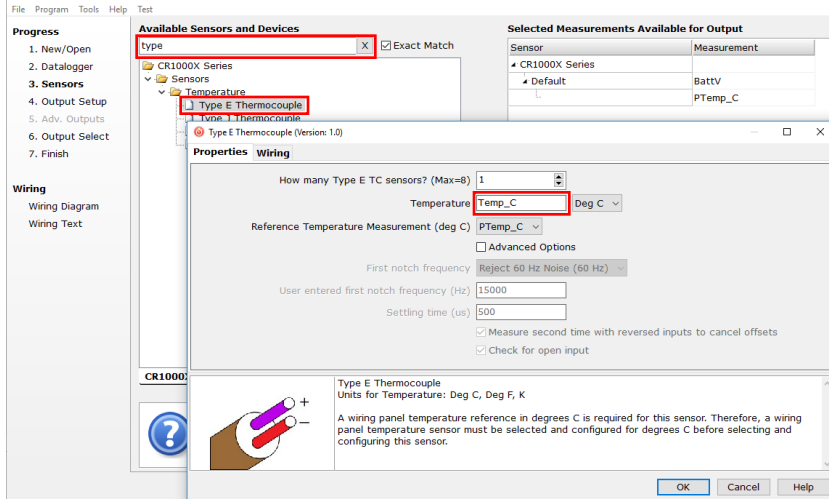
4. QuickStart

A video that describes data logger programming using *Short Cut* is available at: www.campbellsci.com/videos/cr1000x-datalogger-getting-started-program-part-3. *Short Cut* is an easy way to program your data logger to measure the sensor and assign data logger wiring terminals. *Short Cut* is available as a download on www.campbellsci.com. It is included in installations of *LoggerNet*, *PC200W*, *PC400*, or *RTDAQ*.

The following procedure shows using *Short Cut* to program the type-E thermocouple of the ASPTC. A reference temperature measurement is required. For this tutorial, the data logger panel temperature measurement is used as the reference temperature measurement.

1. Open *Short Cut* and click **Create New Program**.
2. Double-click the data logger model.

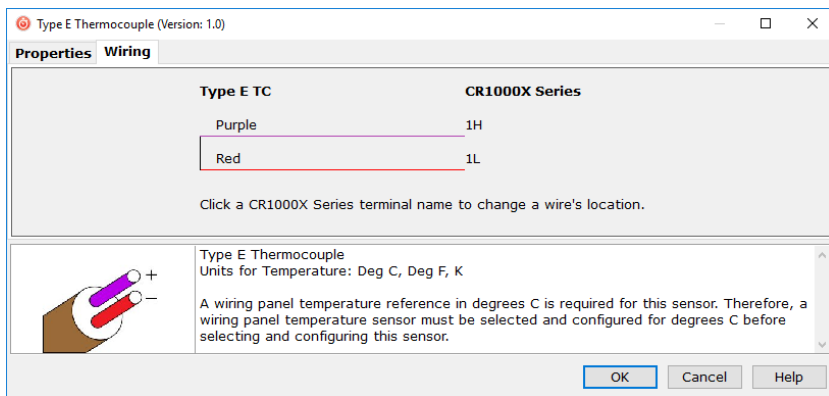
3. In the **Available Sensors and Devices** box, type Type E Thermocouple or locate the sensor in the **Sensors > Temperature** folder. Double-click **Type E Thermocouple**. The temperature defaults to degrees C. This can be changed by clicking the **Temperature** box and selecting one of the other options.



4. Click the **Wiring** tab to see how the sensor is to be wired to the data logger. Click **OK** after wiring the sensor.

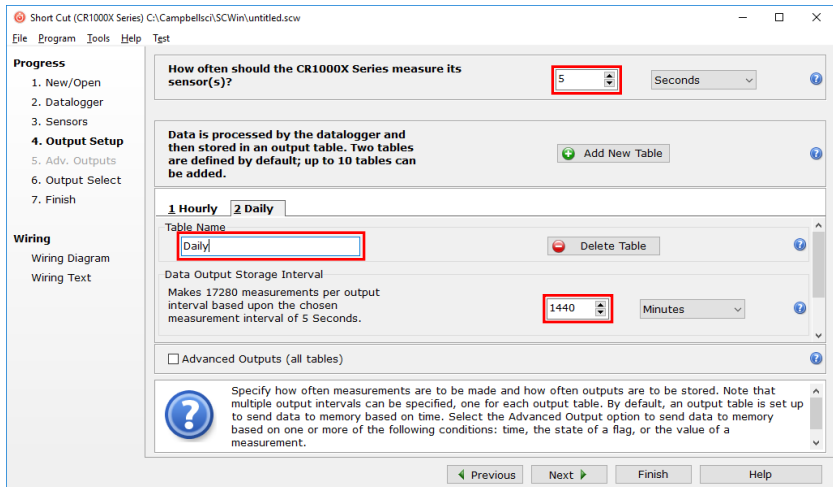
NOTE

The *Short Cut* wiring diagram is only for the signal cable and does not show the shield wire, which connects to a ground terminal on the data logger. The power cable connects to an external power supply (Section 7.3, *Wiring* (p. 5)).



5. Repeat steps three and four for other sensors you want to measure. Click **Next**.

6. In **Output Setup**, type the scan rate, meaningful **Table Names**, and **Data Output Storage Interval**.



7. Select the measurement and its associated output option.
8. Click **Finish** and save the program. Send the program to the data logger if the data logger is connected to the computer.
9. If the sensor is connected to the data logger, check the output of the sensor in data display in *LoggerNet*, *PC400*, *RTDAQ*, or *PC200W* to make sure it is making reasonable measurements.

5. Overview

The ASPTC radiation shield is an elongated tube constructed from white UV-stabilized polyethylene that provides low thermal conductivity and heat retention. A fan draws air across the measurement junction, which reduces solar loading on the thermocouple. The radiation shield also protects the thermocouple, increasing the thermocouple durability.

The ASPTC fine-wire thermocouple consists of a chromel wire and a constantan wire joined at a measurement junction. A voltage potential is generated when the measurement end of the thermocouple is at a different temperature than the reference end of the thermocouple. The magnitude of the voltage potential is related to the temperature difference. Therefore, temperature can be determined by measuring the differences in potential created at the junction of the two wires.

A reference temperature measurement (typically measured at the data logger wiring panel) is required.

6. Specifications

Weight: 0.9 kg (1.9 lb)

Shield

Material: UV stabilized polyethylene

Dimension

Length: 53.3 cm (21 in)

Height: 14.7 cm (5.8 in)

Large Outer Diameter: 5.8 cm (2.3 in)

Small Outer Diameter: 4.6 cm (1.8 in)

Fan

Air Velocity at Thermocouple: 5.5 m/s @ 12 VDC

Life Expectancy: 65,000 hr @ 30 °C

Current Drain: 260 mA @ 12 VDC

Operating Voltage: 9 to 13 Vdc

Operating Temperature: -10 to 70 °C

Reverse Polarity Protected

Thermocouple

Type: Chromel-Constantan (type E)

Diameter: 0.0762 mm (0.003 in)

Typical Output: 60 $\mu\text{V}/^\circ\text{C}$

7. Installation

If you are programming your data logger with *Short Cut*, skip Section 7.3, *Wiring* (p. 5), and Section 7.4, *Programming* (p. 6). *Short Cut* does this work for you. See Section 4, *QuickStart* (p. 1), for a *Short Cut* tutorial.

7.1 Power Considerations

The ASPTC should be powered by using an external 12 VDC deep cycle, battery recharged with an SP20R solar panel or by using the PS200 or PS150 recharged with an AC charger. A solar panel used with the PS200 or PS150 does not have enough reserve power for overcast days.

7.2 Mounting

The ASPTC is mounted on a user supplied crossarm with a square cross section of 4 cm x 4 cm (1.5 in x 1.5 in).

The ASPTC also can be mounted on the retired Bowen Ratio arms (FIGURE 7-1) or retired UT018 crossarm (FIGURE 7-2). When using the Bowen Ratio arms to mount the ASPTC, mount it to the side of the arm such that the ASPTC intake is at the same height as the water vapor intake.



FIGURE 7-1. ASPTCs Mounted to Bowen Ratio Arms

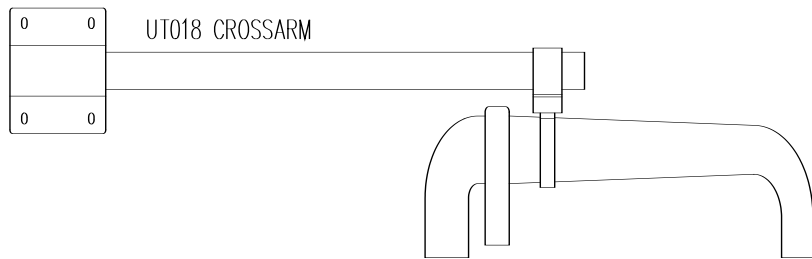


FIGURE 7-2. ASPTC Mounted to the UT018

7.3 Wiring

The ASPTC has a signal cable and a power cable. The signal cable connects to the data logger and the power cable connects to an external power supply. For absolute temperature measurements, differential terminals are recommended to reduce noise. For delta T measurements, the lower ASPTC typically uses single-ended terminals and the upper ASPTC uses differential terminals. TABLE 7-1 shows the wiring for the ASPTC.

TABLE 7-1. Wire Color, Function, and Connections to the Data Logger

Wire Color	Function	Data Logger Terminals		External Battery Terminals
		Differential	Single-Ended	
Signal Cable				
Purple	Analog signal	U configured for differential high ¹ , DIFF H (differential high, analog-voltage input)	U configured for single-ended ¹ , SE (single-ended, analog-voltage input)	NA
Red	Signal reference	U configured for differential low ¹ , DIFF L (differential low, analog-voltage input)	⏏ (analog ground)	NA
Clear	Shield	⏏ (analog ground)	⏏ (analog ground)	NA
Power Cable				
Red	Power	NA	NA	12V +
Black	Power ground	NA	NA	G –

¹ U terminals are automatically configured by the measurement instruction.

7.4 Programming

Short Cut is the best source for up-to-date data logger programming code for measuring absolute temperature. If your data acquisition requirements are simple, you can probably create and maintain a data logger program exclusively with *Short Cut*. If your data acquisition needs are more complex, the files that *Short Cut* creates are a great source for programming code to start a new program or add to an existing custom program.

NOTE

Short Cut cannot edit programs after they are imported and edited in *CRBasic Editor*.

A *Short Cut* tutorial is available in Section 4, *QuickStart* (p. 1). If you wish to import *Short Cut* code into *CRBasic Editor* to create or add to a customized program, follow the procedure in Appendix A, *Importing Short Cut Code into CRBasic Editor* (p. A-1). Programming basics for *CRBasic* data loggers are provided in the following sections. Complete program examples for select *CRBasic* data loggers can be found in Appendix B, *Example Programs* (p. B-1).

7.4.1 Absolute Temperature

Use the **TCDiff()** *CRBasic* instruction to measure a single ASPTC. The **TCDiff()** instruction has the following form:

```
TCDiff( Dest, Repts, Range, DiffChan, TCType, TRef, RevDiff,
SettlingTime, integration or fN1, MuIt, Offset )
```

Choose TypeE for the TCType. A reference temperature measurement (TRef) is required, which can be provided by the data logger panel temperature measurement. Use the **PanelTemp()** instruction to measure the data logger panel temperature.

7.4.2 Delta Temperature

Delta temperature is measured using two ASPTCs. Use the **TCSE()** CRBasic instruction to measure the lower ASPTC. Choose TypeE for the TCType and use the data logger panel temperature measurement for the reference temperature. Use the **TCDiff()** CRBasic instruction to measure the upper ASPTC. Choose TypeE for the TCType and use the lower ASPTC measurement as the reference temperature. If the accuracy of the absolute temperature at both the lower and upper ASPTC is a concern, measure both ASPTCs with the **TCDiff()** CRBasic instruction.

Delta temperature is calculated by subtracting the upper ASPTC measurement from the lower ASPTC measurement.

8. Maintenance

Keep the intake and thermocouple free from debris. Debris can be blown away with a can of compressed air. Tweezers may also be used to pick the debris from the thermocouple. Be careful not to damage the junction.

Appendix A. Importing Short Cut Code into CRBasic Editor


Short Cut creates a .DEF file that contains wiring and memory usage information, and a program file that can be imported into the *CRBasic Editor*. By default, these files reside in the C:\campbellsci\SCWin folder.

Import *Short Cut* program file and wiring information into *CRBasic Editor*:

1. Create the *Short Cut* program following the procedure in Section 4, *QuickStart* (p. 1). After saving the *Short Cut* program, click the **Advanced** tab then the **CRBasic Editor** button. A program file with a generic name will open in CRBasic. Provide a meaningful name and save the CRBasic program. This program can now be edited for additional refinement.

NOTE

Once the file is edited with *CRBasic Editor*, *Short Cut* can no longer be used to edit the program it created.

2. To add the *Short Cut* wiring information into the new CRBasic program, open the .DEF file located in the C:\campbellsci\SCWin folder, and copy the wiring information, which is at the beginning of the .DEF file.
3. Go into the CRBasic program and paste the wiring information into it.
4. In the CRBasic program, highlight the wiring information, right-click, and select **Comment Block**. This adds an apostrophe (') to the beginning of each of the highlighted lines, which instructs the data logger compiler to ignore those lines when compiling. The **Comment Block** feature is demonstrated at about 5:10 in the [CRBasic | Features](#) video .

Appendix B. Example Programs

This appendix includes two example CR1000X programs. TABLE B-1 provides the wiring for first example, which measures absolute temperature using one ASPTC. TABLE B-2 provides wiring for the second example program, which uses an upper and a lower ASPTC to measure temperature gradient. The lower ASPTC is measured using single-ended channels and the upper ASPTC is measured using differential channels. The data logger panel temperature is used as the reference temperature for the lower ASPTC measurement. The temperature of the lower ASPTC is used as the reference for the differential thermocouple measurement.

TABLE B-1. Wiring for Absolute Temperature Program Example			
Wire Color	Function	CR1000X Terminals	External Battery Terminals
Signal Cable			
Purple	Analog signal	1H	NA
Red	Signal reference	1L	NA
Clear	Shield	⊥ (analog ground)	NA
Power Cable			
Red	Power	NA	12V +
Black	Power ground	NA	G -

```

CRBasic Example B-1. CR1000X Program Measuring Absolute Temperature Using the ASPTC

'CR1000X Series Data Logger

Public PTemp_C
Public Temp_C

Units PTemp_C = Deg C
Units Temp_C = Deg C

'Define Data Table
DataTable (Hourly,1,-1)
  DataInterval (0,60,Min,10)
  Average (1,Temp_C, FP2, False)
EndTable

'Main Program
BeginProg
  Scan (1,Sec,0,0)
  PanelTemp (PTemp_C,60)
  TCDiff (Temp_C,1,mV200C,1,TypeE,PTemp_C,TRUE,0,60,1,0)

'Call Data Table and store data
  CallTable (Hourly)
  NextScan
EndProg
  
```

TABLE B-2. Wiring for Temperature Gradient Example Program				
Wire Color	Function	CR1000X Terminals		External Battery Terminals
		Upper ASPTC	Lower ASPTC	
Signal Cable				
Purple	Analog signal	3H	SE6	NA
Red	Signal reference	3L	⏏ (analog ground)	NA
Clear	Shield	⏏ (analog ground)	⏏ (analog ground)	NA
Power Cable				
Red	Power	NA	NA	12V +
Black	Power ground	NA	NA	G -

CRBasic Example B-2. CR1000X Program Measuring Temperature Gradient Using Two ASPTCs

```
'CR1000X Series Data Logger

Public ref_tmpr
Public asp_lwr
Public asp_upr
Public del_asp

Units ref_tmpr = Deg C
Units asp_lwr = Deg C
Units asp_upr = Deg C
Units del_asp = Deg C

'Define Data Table
DataTable (Hourly,1,-1)
  DataInterval (0,60,Min,10)
  Average (1,asp_lwr, FP2, False)
  Average (1,asp_upr, FP2, False)
  Average (1,del_asp, FP2, False)
EndTable

'Main Program
BeginProg
  Scan (1,Sec,0,0)
  PanelTemp (ref_tmpr,60)

'Measure lower and upper ASPTCs

  TCSe (asp_lwr,1,mV200C,6,TypeE,ref_tmpr,TRUE,0,60,1,0)
  TCDiff (asp_upr,1,mV200C,3,TypeE,asp_lwr,TRUE,0,60,1,0)

'Calculate delta temperature
  del_asp = asp_lwr - asp_upr

'Call Data Table and store data
  CallTable (Hourly)
  NextScan
EndProg
```




Global Sales & Support Network

A worldwide network to help meet your needs



● Campbell Scientific
Regional Offices

● Sales Representatives

Australia

Location: Garbutt, QLD Australia
Phone: 61.7.4401.7700
Email: info@campbellsci.com.au
Website: www.campbellsci.com.au

Brazil

Location: São Paulo, SP Brazil
Phone: 11.3732.3399
Email: vendas@campbellsci.com.br
Website: www.campbellsci.com.br

Canada

Location: Edmonton, AB Canada
Phone: 780.454.2505
Email: dataloggers@campbellsci.ca
Website: www.campbellsci.ca

China

Location: Beijing, P. R. China
Phone: 86.10.6561.0080
Email: info@campbellsci.com.cn
Website: www.campbellsci.com

Costa Rica

Location: San Pedro, Costa Rica
Phone: 506.2280.1564
Email: info@campbellsci.cc
Website: www.campbellsci.cc

France

Location: Vincennes, France
Phone: 0033.0.1.56.45.15.20
Email: info@campbellsci.fr
Website: www.campbellsci.fr

Germany

Location: Bremen, Germany
Phone: 49.0.421.460974.0
Email: info@campbellsci.de
Website: www.campbellsci.de

South Africa

Location: Stellenbosch, South Africa
Phone: 27.21.8809960
Email: sales@campbellsci.co.za
Website: www.campbellsci.co.za

Southeast Asia

Location: Bangkok, Thailand
Phone: 66.2.719.3399
Email: thitipongc@campbellsci.asia
Website: www.campbellsci.asia

Spain

Location: Barcelona, Spain
Phone: 34.93.2323938
Email: info@campbellsci.es
Website: www.campbellsci.es

UK

Location: Shephed, Loughborough, UK
Phone: 44.0.1509.601141
Email: sales@campbellsci.co.uk
Website: www.campbellsci.co.uk

USA

Location: Logan, UT USA
Phone: 435.227.9120
Email: info@campbellsci.com
Website: www.campbellsci.com