

SOIL CLASSIFICATION

You will return to the contents of P1 SOIL by clicking the pictogram



identification book for soil, a pocket penetrometer and a pocket vane shear tester, an aplanatic magnifier and a pocket knife are included in the set. For the determination of the groundwater level a sounding device with measuring tape has been included.

- Various accessories including: a glass fibre utility probe (to check the substratum to avoid cutting through obstacles such as cables and tubes), aluminium soil sample boxes, a field data registration set, maintenance kit, work gloves and an aluminium transport case.

08.14 Soil quality determination kit

The compact set can be used for basic research of soil properties. The set can be applied e.g. for training purposes in schools and soil research by farmers and gardeners. The set includes a small gouge auger to sample the top layer, cleaning spatula, soil colour book, pocket penetrometer, pocket hand sieve set, pH indicator and a synthetic transport case.



Soil quality determination kit



Soil colour chart

08.11 Soil colour charts

Determination of a subgroup in the soil classification system is based among other aspects on colour differences. The colour of the soil is determined by comparing the sample with standard soil colour charts (Munsell). Soil colour charts are available in a Japanese (12 colour charts) and American (8 colour charts) version.

99.07 Geologist hammers

Geologist hammers can be obtained pointed or with a blade. They are used to obtain a rough indication of the hardness of soil or rock, the removing of fossils, scraping stones, emptying gouges and many other applications.

99.08 Sample flasks and boxes

For storage and transportation of soil-, water- and plant samples various means of storage can be obtained such as: aluminium boxes, plastic flasks, sample gutters and a variety of glass bottles.



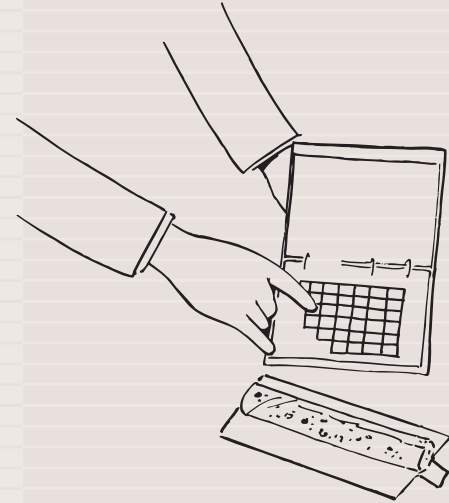
Geologist hammers



Sample flasks and aluminium boxes

P1.07

The soil colour is classified by comparing the sample with standard colour charts.



The geologist hammer is used to loosen a piece of stone.

