

# LOST CONE DRILLING METHOD

You will return to the contents of P1 SOIL by clicking the pictogram



P1.10

## Applications

The lost cone drilling method is successfully applied when placing monitoring well pipes with a small diameter, for environmental research.

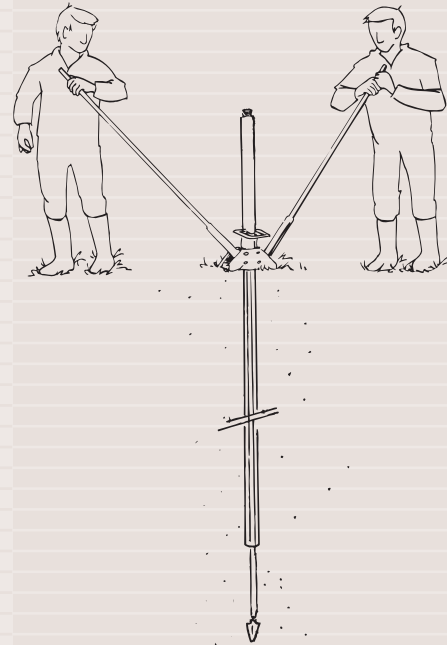
After drilling the lost cone is left in the soil. This does not cause any environmental problems as the material used is present in the soil by nature.

A completely different application of the set is making holes for the installation of explosives for seismic research.

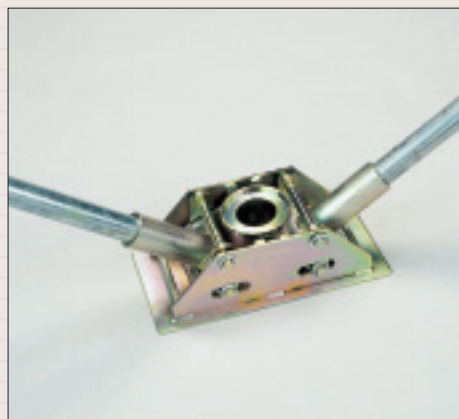
## Advantages

- Complete set.
- Fast and efficient drilling method.
- No large means of transport required allowing operation in less accessible areas.
- The special shape of the lost cones makes that there is less friction when the casing is inserted and extracted again.

Using the 2-man operated mechanical rod puller the casing is pulled from the bore hole.



Casing with striking pen



2-man operated mechanical rod puller



Casing/rod puller clamp + clamping jaw

## BENEFITS

### Lost cone drilling set

- Solves problems installing wells in stony soils
- Also the safest way to lower explosives
- Bentonite plugs will repair layers perfectly
- Ideal in combination with Direct Well
- Tested for ten-thousands of drilling meters
- Non-toxic iron lost point copes with analysis



www.eijkelkamp.com