



A / mA Converter

6.60

General

The Ampere / mA converter is applied for monitoring of motor current where the motor current from one of the phase conductors is converted to an mA-signal, so the motor current can be applied for control, monitoring and recording.

The converter is an often used accessory when energy optimizing is in use.

The converter is supplied with two separated channels especially concerning monitoring of the many pumpstations equipped with two pumps.

Features

- Double unit with two separate channels.
- Measuring range from 0-10 A to 0-100 A.
- Easy to install - DIN-rail mounting.
- Loop powered from the current transformer.
- Monitoring of pumpmotor current.

Applications

- Pumpstations
- Waterworks
- Waste water plants
- Industrial pump applications
- Pump installations in general

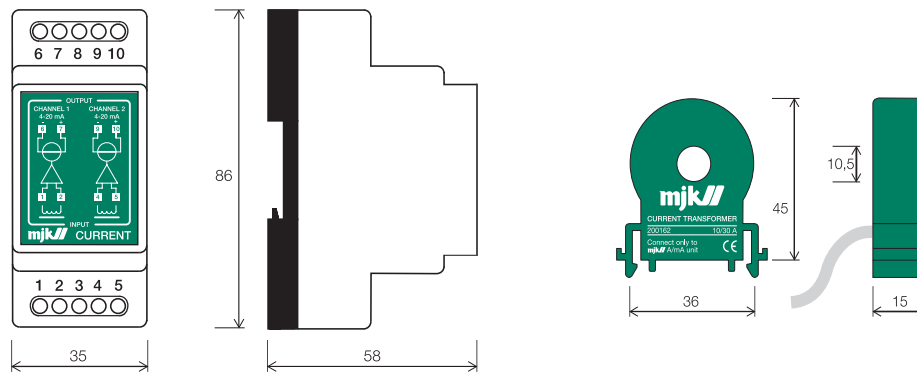


DATASHEET

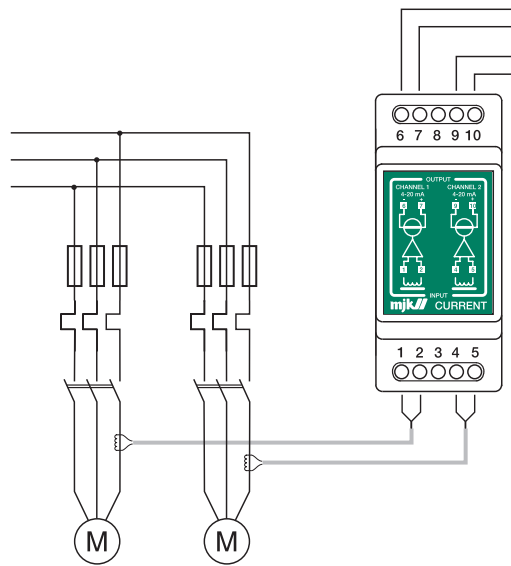
EN 6.60 A / mA CONVERTER DATASHEET 2008

A / mA Converter

Dimensions



Electrical Connections



Channel 1: 4 - 20 mA (loop supplied)

Channel 2: 4 - 20 mA (loop supplied)

The signal can be connected to i.e. a frequency converter, indicator or MJK Data Transmitter.

Specifications

A/mA Converter and Transformer			
Input	Current transformers: 10 / 30 A or 33 / 100 A	Temperature	- 20 ... + 60 °C
Output	4 - 20 mA	Channels	2 pcs.
Supply	10 - 30 V DC	Enclosure	IP 22
Accuracy	Better than ± 2 %	Mounting	DIN-rail

Order Numbers

A/mA Converter and Transformer	
200161	Double A/mA converter
200162	10/30A transformer for A/mA converter
200163	33/100A transformer for A/mA converter